

Photocontrol - Locking Type Thermal Photocontrol, 120 V

Item LC4521C



PRODUCT DESCRIPTION

These photocontrols install on light fixtures with ANSI C136.10 NEMA receptacles commonly found on street light fixtures. Locking type design facilitates fast installation and replacement of photocontrol.

FEATURES

- ▶ Mechanical bimetal switch with Cadmium Sulfide photocell
- ▶ Integral high impact thermoplastic housing
- ▶ Locking type plug for quick installation and changeover
- ▶ Delay feature prevents unwanted OFF switching
- ▶ Complies with ANSI C136.10 standard
- ▶ Tested to 3,650 ON/OFF cycles

APPLICATIONS

- ▶ Exterior Lighting
- ▶ Street Lighting
- ▶ Parking Lot
- ▶ Pedestrian Pathway Lighting
- ▶ Landscape Lighting

TECHNICAL DATA

General

Model Number	LC4521C
Description	Locking Type Thermal Photocontrol, 120 V
UPC Code	078275002043
Brand	Intermatic
Country of Origin (Intermatic)	MEXICO
Warranty	2-Year limited
Usage Environments	Outdoor
Photocontrol Type	Thermal
Expected Lifetime (Years)	5
Expected Lifetime (Operations)	3650
Application Compatibilities	HID; Incandescent
Photocontrol Style	Locking type
Photocontrol Sensor Location	Side

Control Specifications

Sensor Time Delay	30 sec to 90 sec
Photocell Type	Cadmium Sulfide
Photo Control Switch Type	Mechanical Bimetal
Fail Mode	ON
Activation On	5 fc
Activation Off	15 fc

Dimensions

Product Height (in)	2 3/4
Product Height (mm)	69.9

Product Diameter (in)	3
-----------------------	---

Product Diameter (mm)	76.2
-----------------------	------

Material Specifications

Cover Color	White with Gray Band
-------------	----------------------

Housing Material	Polypropylene
------------------	---------------

Load Ratings

Magnetic Ballast Range(s)	8.3 A, 1000 VA
---------------------------	----------------

Tungsten Range(s)	15 A, 1800 W
-------------------	--------------

Electrical Specifications

Input Voltage Range(s)	120 VAC, 50/60 Hz
------------------------	-------------------

Packaging

Shipping Weight (lbs)	0.2
-----------------------	-----

Unit Carton Height (in)	3.25
-------------------------	------

Environmental Specifications

Temperature (operation)	-40°C..70°C
-------------------------	-------------

Standards and Certifications

UL Certification	UL
------------------	----

CSA Certification	cCSAus
-------------------	--------

Other Certifications and Compatibilities	CA Title 20; Ansi C136.10
--	---------------------------

California Proposition 65	None
---------------------------	------

ACCESSORIES



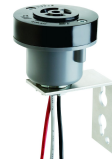
K4500
Shorting Plug for Locking Type Receptacles



K121
Locking Type Receptacle, 3-Pin, C136.10
Compliant, 9" lead



K121-30
Locking Type Receptacle, 3-Pin, C136.10
Compliant, 30" lead



K122
Locking Type Receptacle, 3-Pin, C136.10
Compliant, with Pole Mounting Bracket



K171H
Locking Type Receptacle, 7-Pin, C136.41
Compliant, 12" lead



KPT1170-010
PowerTap Receptacle, 7-Pin, C136.41
Compliant, Dusk-to-Dawn, 10' cable



KPT0170-010
PowerTap Receptacle, 7-Pin, C136.41
Compliant, Always-On, 10' cable