

## Photocontrol - Stem and Swivel Mount Electronic Photocontrol, 120-277 V

Item EK4736S



### PRODUCT DESCRIPTION

NightFox™ electronic photocontrols permanently install on outdoor electrical boxes or outdoor lighting fixtures. Ideal for LED fixtures with long-life expectations. 1/2"-14 NPSM threaded stem fits standard outlet boxes and wall packs with 9" wire leads.

### FEATURES

- ▶ Non-drift silicon light sensor with IR filter
- ▶ DC relay with zero-crossing circuitry for extended life
- ▶ Conformal coated PCB
- ▶ 15-year design life
- ▶ Exceeds 10,000 ON/OFF switching cycles
- ▶ Fail ON mode
- ▶ Ideal for single or multifixture HID and LED installations (up to 1,650 W @ 277 VAC)
- ▶ 255 J MOV surge protection element
- ▶ 1/2"-14 NPSM threaded stem fits standard outlet boxes and wall packs
- ▶ #18 AWG wire leads

### APPLICATIONS

- ▶ Parking Lot Lighting
- ▶ Landscape Lighting
- ▶ Exterior Lighting
- ▶ Street Lighting
- ▶ Pedestrian Pathway Lighting

### TECHNICAL DATA

General	
Model Number	EK4736S
Description	Stem and Swivel Mount Electronic Photocontrol, 120-277 V
UPC Code	078275146310
Brand	Intermatic
Country of Origin (Intermatic)	MEXICO
Warranty	8-Year limited
Usage Environments	Outdoor
Photocontrol Type	Electronic
Expected Lifetime (Years)	15
Expected Lifetime (Operations)	10000
Application Compatibilities	LED; Incandescent; HID
Photocontrol Style	Stem; Swivel Mount
Photocontrol Sensor Location	Top
Control Specifications	
Sensor Time Delay	Instant ON; 2 sec to 5 sec OFF
Photocell Type	Silicon Diode
Photo Control Switch Type	Relay
Fail Mode	ON
Activation On	1.5 fc
Activation Off	4.5 fc

### Dimensions

Product Height (in)	5 5/8
Product Height (mm)	142.9
Product Width (in)	1 5/16
Wire Lead Length (in)	6
Wire Size Max	#18 AWG

### Material Specifications

Cover Color	Gray
Housing Material	Polycarbonate

### Load Ratings

Tungsten Range(s)	1000 W
Ballast (Fluorescent)	1800 VA
Ballast (Fluorescent) Range(s)	1800 VA
Electronic Ballast Range(s)	6 A, 120-277 VAC, 50/60 Hz

### Electrical Specifications

Wiring Option	Wire leads
Input Voltage Range(s)	120-277 VAC, 50/60 Hz
Surge Protection	255 J MOV, 5,000 A Surge

### Packaging

Shipping Weight (lbs)	0.28
Unit Carton Height (in)	4.875

### Environmental Specifications

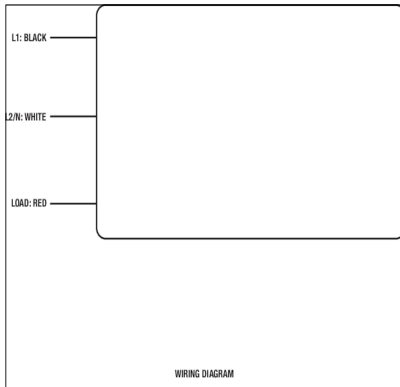
Temperature (operation)	-40°C..70°C
-------------------------	-------------

### Standards and Certifications

UL Certification	UL
CSA Certification	CSA
Other Certifications and Compatibilities	CA Title 20; Ansi C136.24
California Proposition 65	None
RoHS Certification	Yes

---

## DIAGRAMS



---

## ACCESSORIES



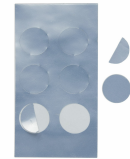
22LG0120  
Light Guard



6LV1352  
Light Shield for Button Photocontrol (K4000 Series, K4321, K4400 Series, EK4036S, EK4336S, EK4436SM)



K43-WP-KIT  
Wall Plate Kit (for Button – K4000 Series, EK4036S)



LGLBL  
Lens Stickers (12 pack)