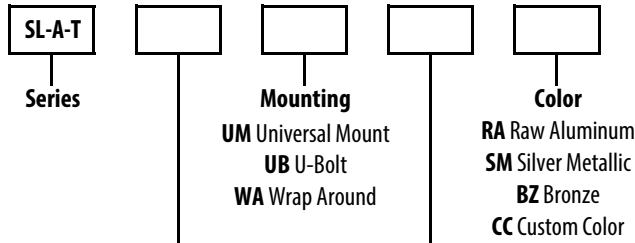


SL-A-T Series

Aluminum Sports Lighter Brackets with Tenon

- Aluminum Angle Welded Construction
- Allows for Multiple Fixture Mounting
- Choice of Mounting Options
- Choice of Spacing
- Raw Aluminum or Powder Coat Finish
- Optional Custom Colors

Ordering/Specifying Information

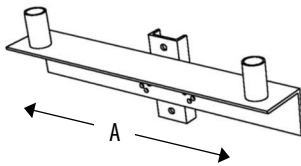


Fixtures

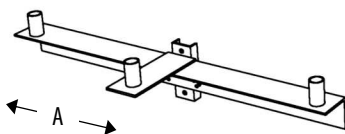
- 2 2 Fixtures
- 3 3 Fixtures
- 4 4 Fixtures
- 5 5 Fixtures
- 6 6 Fixtures

Spacing "A"

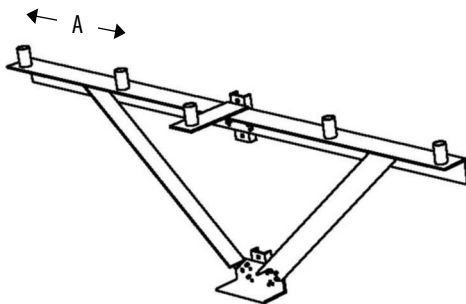
- 18 18"
- 24 24"
- 30 30"
- 36 36"



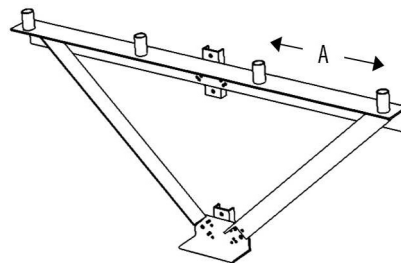
SL-A-T-2



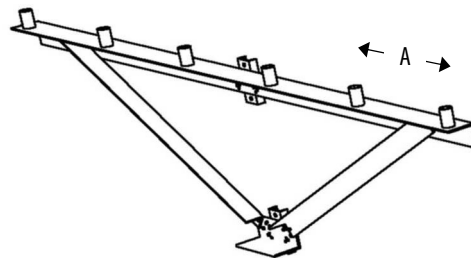
SL-A-T-3



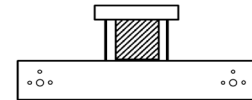
SL-A-T-5



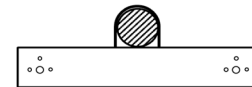
SL-A-T-4



SL-A-T-6



WA Wrap Around



UB U-Bolt

NOTES

- 1) 6" x 6" x 3/8" Aluminum Angle
- 2) 3.5" x 2.25" x .25" Aluminum Channel (UM)
- 3) Continuous Welded Construction
- 4) Aluminum Angle Bolted Support on Longer Units
- 5) Circumferentially Welded 2.38" OD x 4" Tenons



PROJECT		SOUTHEAST POLES		
TYPE	QTY	TITLE		
NOTES		Aluminum Sports Lighter Brackets with Tenon		
APPROVAL		DRAWING/FILE		
		SE Pole and Bracket Catalog.xlsx		
		DATE	SCALE	SHEET
		4/26/2018	N.T.S.	1 OF 1