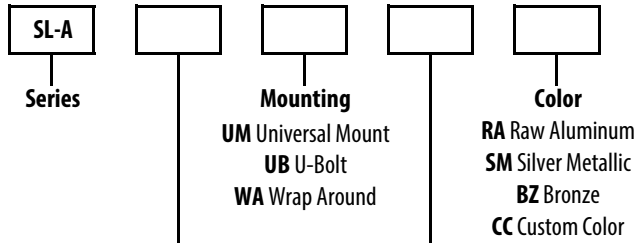


SL-A Series

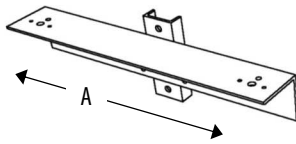
Aluminum Sports Lighter Brackets

- Aluminum Angle Welded Construction
- Allows for Multiple Fixture Mounting
- Choice of Mounting Options
- Choice of Spacing
- Raw Aluminum or Powder Coat Finish
- Optional Custom Colors

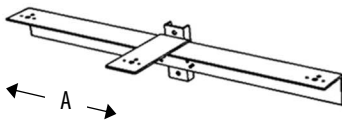
Ordering/Specifying Information



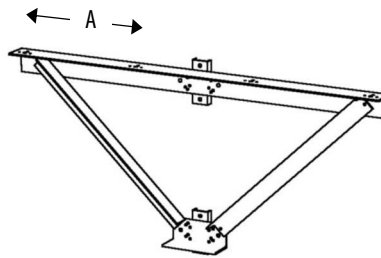
Fixtures	Spacing "A"
2 2 Fixtures	18 18"
3 3 Fixtures	24 24"
4 4 Fixtures	30 30"
5 5 Fixtures	36 36"
6 6 Fixtures	



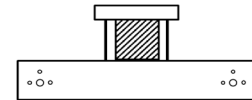
SL-A-2



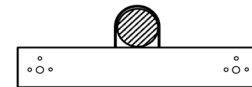
SL-A-3



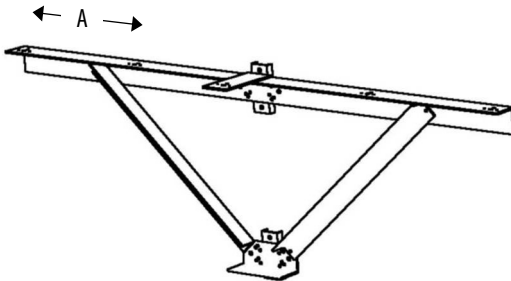
SL-A-4



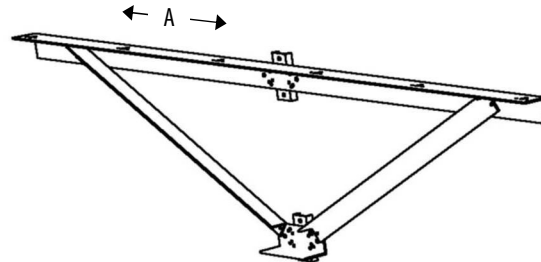
WA Wrap Around



UB U-Bolt



SL-A-5



SL-A-6

NOTES

- 1) 6" x 6" x 3/8" Aluminum Angle
- 2) 3.5" x 2.25" x .25" Aluminum Channel (UM)
- 3) Continuous Welded Construction
- 4) Aluminum Angle Bolted Support on Longer Units



PROJECT		SOUTHEAST POLES		
TYPE	QTY	TITLE		
NOTES		DRAWING/FILE		
APPROVAL		DATE	SCALE	SHEET
		4/26/2018	N.T.S.	1 OF 1
		Aluminum Sports Lighter Brackets		
		SE Pole and Bracket Catalog.xlsx		