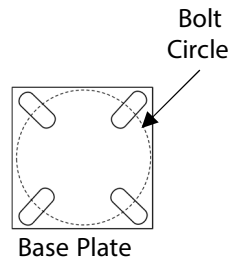


**FEATURES**

- Extruded Aluminum Tube
- Solid Aluminum Base Plate
- Solid Aluminum Gussets
- All Parts Circumferentially Welded
- Bronze Finish with Optional Colors
- Side or Tenon Mount
- Mounting Heights up to 30 Feet
- Normal Duty .125 Wall
- Heavy Duty .25 Wall
- S Strengthening Process Option
- Handhole Access for Wiring
- Pole Base Cover Included
- Optional Bolts
- Foundation Sold Separately
- Use CBR-24 Series or Field Cast

**APPLICATIONS**

- Parking Areas
- Roadway
- General Area



# PAS Series

# Square Aluminum Pole

## Pole Ordering/Specifying Information

<b>PAS</b>						
<b>SERIES</b>	<b>Size</b> 4 4" x 4" 5 5" x 5" 6 6" x 6"	<b>Length</b> ___ Feet	<b>Color</b> BZ Bronze CC Custom Color	<b>Duty</b> ND Normal HD Heavy S Strength	<b>Mount</b> _ Drill/Cap T 2.38" Tenon	<b>Options</b> AB Bolts

## Pole Specification Table

Pole	Length	Size	Wall Thickness	Bolt Circle	Bolts	Base Plate Sq/Thick		
PAS-4-10-ND	10	4" x 4"	.125"	8.5-11"	5/8" x 18"	10.65"/.75"		
PAS-4-12-ND	12	4" x 4"	.125"	8.5-11"	5/8" x 18"	10.65"/.75"		
PAS-4-14-ND	14	4" x 4"	.125"	8.5-11"	5/8" x 18"	10.65"/.75"		
PAS-4-15-ND-S	15	4" x 4"	.125"-S	8.5-11"	5/8" x 18"	10.65"/.75"		
PAS-4-15-HD	15	4" x 4"	.250"	8.5-11"	3/4" x 24"	10.65"/.75"		
PAS-4-16-HD	16	4" x 4"	.250"	8.5-11"	3/4" x 24"	10.65"/.75"		
PAS-4-18-HD	18	4" x 4"	.250"	8.5-11"	3/4" x 24"	10.65"/.75"		
PAS-4-20-HD-S	20	4" x 4"	.250"-S	8.5-11"	3/4" x 30"	10.65"/1"		
PAS-5-20-HD	20	5" x 5"	.250"	8.5-11"	3/4" x 30"	10.65"/1"		
PAS-5-24-HD-S	24	5" x 5"	.250"-S	9-11"	1" x 36"	10.65"/1"		
PAS-5-25-HD-S	25	5" x 5"	.250"-S	9-11"	1" x 36"	10.65"/1"		
PAS-6-25-HD-S	25	6" x 6"	.250"-S	11-13"	1" x 36"	12"/1.5"		
PAS-6-30-HD-S	30	6" x 6"	.250"-S	11-13"	1" x 36"	12"/1.5"		

## EPA

Pole	120 MPH	140 MPH	150 MPH	160 MPH	170 MPH	180 MPH		
PAS-4-10-ND	7.4	5.3	4.4	3.7	3.2	2.8		
PAS-4-12-ND	5.8	4.0	3.3	2.7	2.2	1.9		
PAS-4-14-ND	4.5	3.0	3.0	1.9	1.5	1.2		
PAS-4-15-ND-S	7.2	4.6	3.6	2.8	2.1	1.6		
PAS-4-15-HD	10.6	6.5	5.3	4.4	3.5	2.9		
PAS-4-16-HD	8.6	5.7	4.7	3.8	3.0	2.4		
PAS-4-18-HD	6.3	4.2	3.4	2.7	2.2	1.8		
PAS-4-20-HD-S	10.1	6.5	5.1	3.9	2.9	2.2		
PAS-5-20-HD	8.9	5.9	4.7	3.8	3.0	2.4		
PAS-5-24-HD-S	14.2	9.4	7.5	6.0	4.8	3.8		
PAS-5-25-HD-S	12.5	8.3	6.6	5.3	4.2	3.4		
PAS-6-25-HD-S	13.8	9.3	7.6	6.2	5.1	4.2		
PAS-6-30-HD-S	11.0	7.4	6.1	5.0	4.0	3.4		

EPA's are Approximate and need to be Confirmed and Certified by a Registered Professional Engineer  
 Strengthening Process can be Modified to Produce Higher EPA's  
 Consult Factory  
*Specifications Subject to Change*



<b>PROJECT</b>		<b>SOUTHEAST POLES</b>		
<b>TYPE</b>	<b>QTY</b>			
<b>NOTES</b>		<b>TITLE</b> Square Aluminum Pole		
<b>APPROVAL</b>		<b>DRAWING/FILE</b> SE Pole and Bracket Catalog.xlsx		
		<b>DATE</b> 4/26/2018	<b>SCALE</b> N.T.S.	<b>SHEET</b> 2 OF 2