



**FLS Series**

**SPECIFICATIONS**

- Die Cast Aluminum Housing
- Tempered Clear Flat Glass Lens
- Anodized Aluminum Reflector (Non LED)
- Uniformed Poured Silicone Gasket
- Bronze Powder Coat Finish, Optional Custom Color
- HID Porcelain Medium Base 4KV Socket (Non LED)
- Stainless Steel Hardware
- Multiple Light Source Options
- 3K, 4K or 5K LED Color Options
- Universal Volt LED Driver with Optional Dimming
- Optional Surge Protection
- Optional Wire Guard, Glare Shield or Vandal Guard

**APPLICATIONS**

- General Area/Flood Lighting
- Walkways, Parking, Roadway, Area
- Schools, Commercial Buildings, Communities
- Street Lighting, Car Lots, Campuses

**ELECTRICAL**

- 120V: HPS 35W, 50W, 70W, 100W & 150W
- UNV 120-277V: LED 22W
- Quad Volt: HPS & MH 50W, 70W & 100W
- 480V: LED 22W, HPS & MH 100W

**INSTALLATION**

- Mounts with 1/2" Threaded Knuckle

**CERTIFICATIONS/LISTINGS**

- CSA Listed
- Listed for Wet Locations

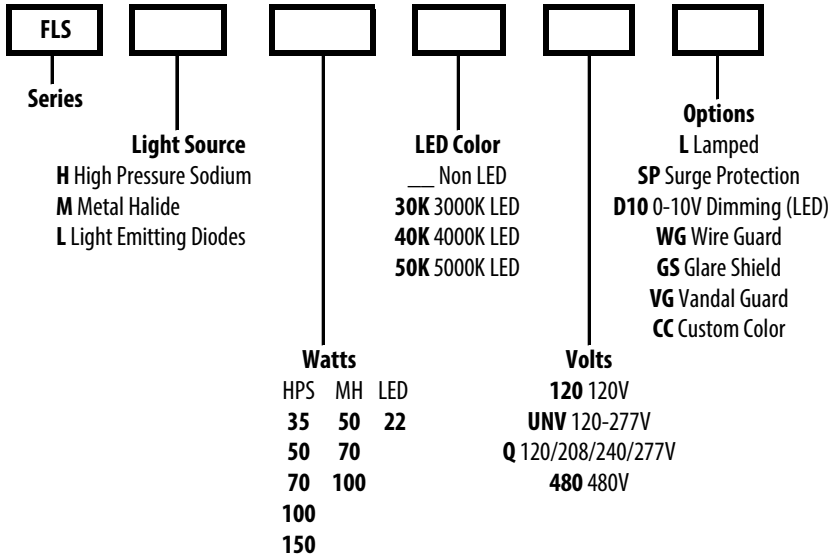


PROJECT \_\_\_\_\_ TYPE \_\_\_\_\_

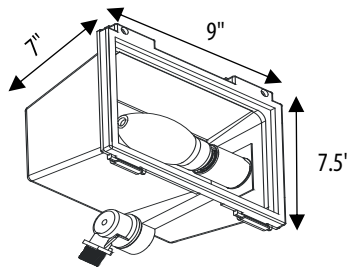
QTY \_\_\_\_\_ NOTES \_\_\_\_\_ APPROVAL \_\_\_\_\_

**ORDERING/SPECIFYING INFORMATION:**

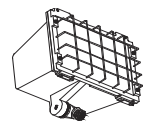
**EXAMPLE:** FLS M 100 Q L



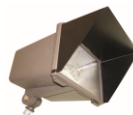
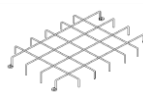
**SPECIFICATIONS**



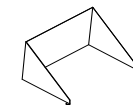
**OPTIONS/ACCESSORIES**



**WG Wire Guard**



**GS Glare Shield**



**VG Vandal Guard**



Specifications Subject to Change

